



POOL & SPA FITTINGS



Pool & Spa Fittings



ATECPOOL provides vast range of swimming pool shell equipments in ABS, high quality stainless steel and poly-propylene, ensuring you find everything you would ever need for an adequate water circulation in your swimming pool under one roof. If you are unsure of shell equipment needed for your

pool, then please contact a member of our team who will help you to select your pool fittings. All pool fittings are designed and engineered by **ATECPOOL** with design excellence, high precision, user friendly, easy to install and high adaptation to individual flow requirements.

Pool Fittings

Standard Skimmer ABS

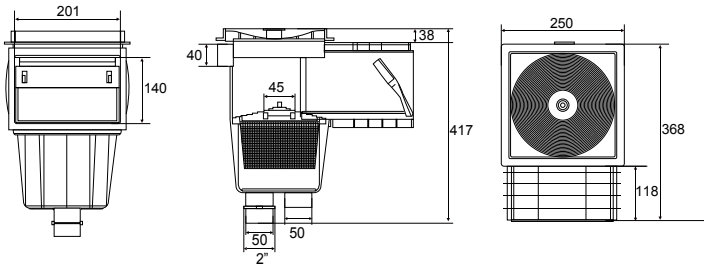
Standard Skimmer ABS

Manufactured in UV treated white ABS with top square lid and frame. With flap and flow regulation plug. Supplied with extra strong plastic basket with handle. Skimmer has an option of 3 connection sizes: 1½" internal threaded, 2" threaded and 50mm diameter for gluing. Overflow connection of 40mm diameter. Max. Recommended flow is 5m³/h. For optimum results it is recommended to use 1 skimmer per 25m² of pool surface area. The skimmer suction can also be used for vacuum cleaning the pool floor.

Standard Skimmer for concrete



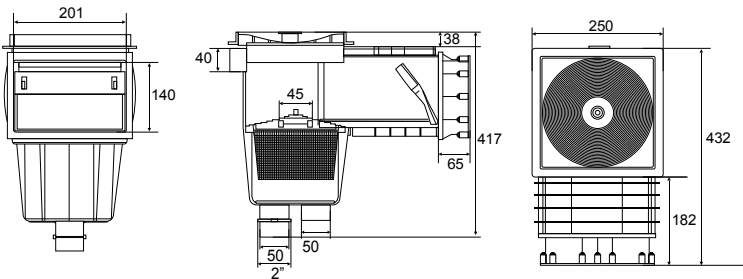
Code	Description	Weight	Volume
		(kg)	(m³)
01590010	Standard Skimmer ABS Concrete	315	0.047



Standard Skimmer with Extended Throat for concrete



Code	Description	Weight	Volume
		(kg)	(m³)
015900101	Standard Skimmer ABS Concrete with Extended Throat	410	0.049

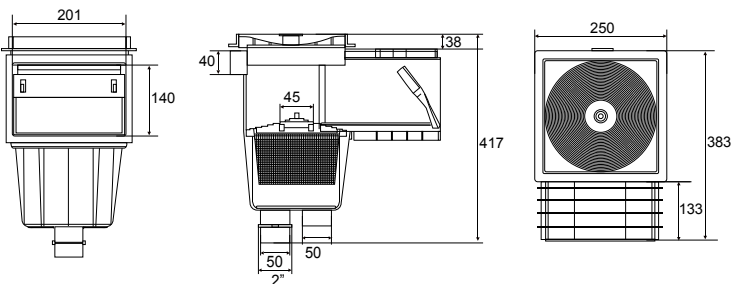


Standard Skimmer for Liner

Supplied with elastic adhesive gasket, flange and screws for liner fixing.



Code	Description	Weight	Volume
		(kg)	(m³)
01591011	Standard Skimmer ABS Liner	5.28	0.047



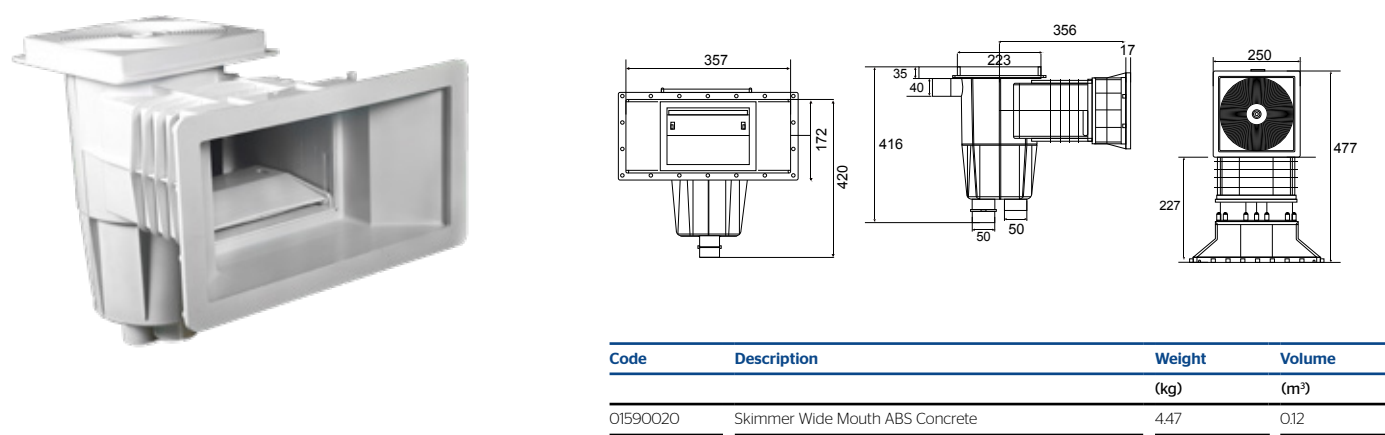
Pool Fittings

Wide Mouth Skimmer ABS

Wide Mouth Skimmer ABS

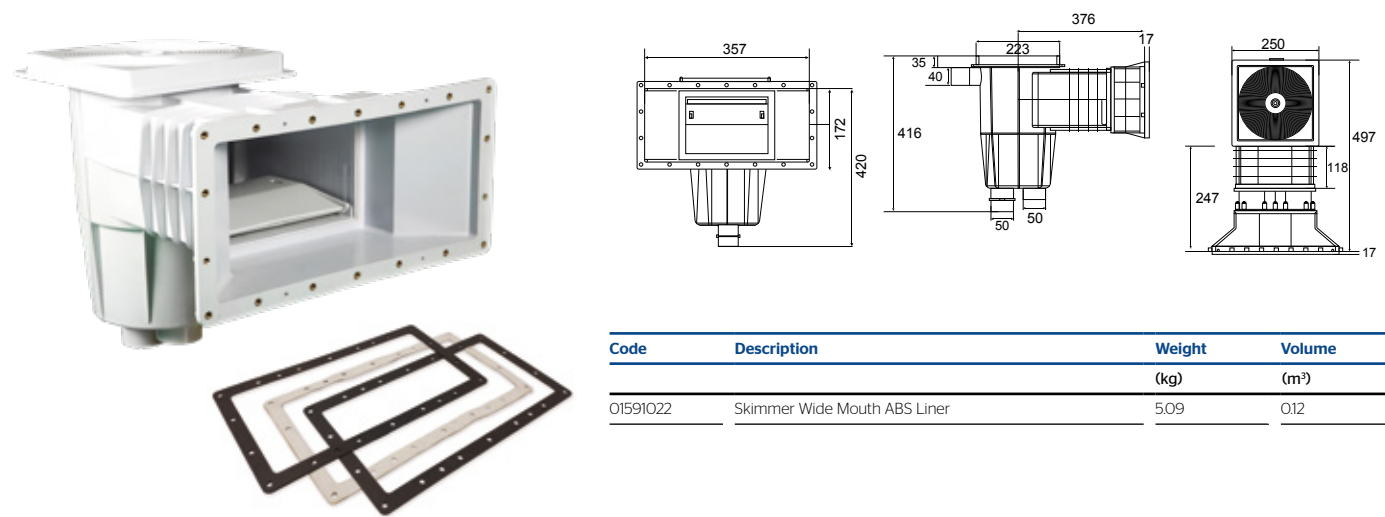
Manufactured in UV treated white ABS with top square lid and frame. With flap and flow regulation plug. Supplied with extra strong plastic basket with handle. Skimmer has an option of 3 connection sizes: 1½" internal threaded, 2" threaded and 50mm diameter for gluing. Overflow connection of 40mm diameter. Max. Recommended flow is 5m³/h. For optimum results it is recommended to use 1 skimmer per 25m² of pool surface area. The skimmer suction can also be used for vacuum cleaning the pool floor.

Wide Mouth Skimmer for concrete



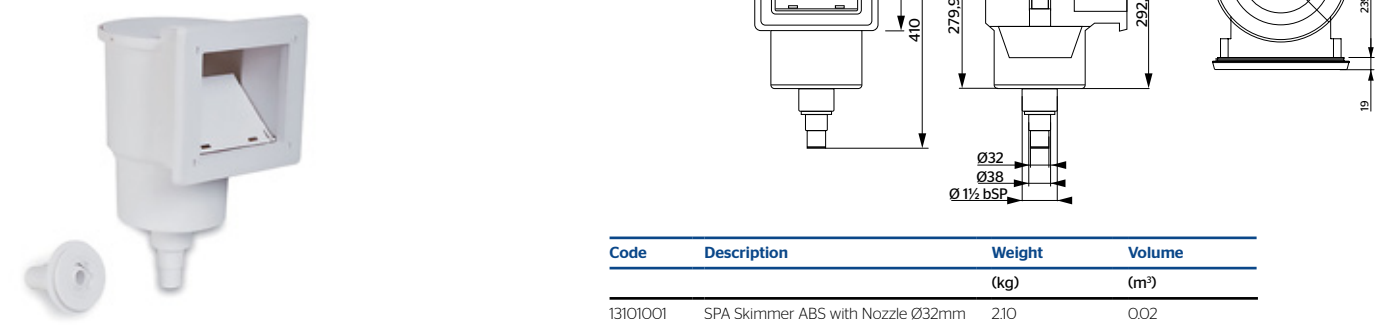
Wide Mouth Skimmer for Liner

Supplied with double elastic adhesive gasket, flange and screws for liner fixing.



Spa Skimmer ABS Ø32mm

SPA Skimmer in UV treated white ABS with Nozzle. Can be used for Concrete and Liner. Connection Ø32 mm. Supplied with a spa nozzle. Used in above ground pool with nozzle.



Pool Fittings

Euro Skimmer ABS

Atecpool Euro Skimmer ABS - Concrete and Liner

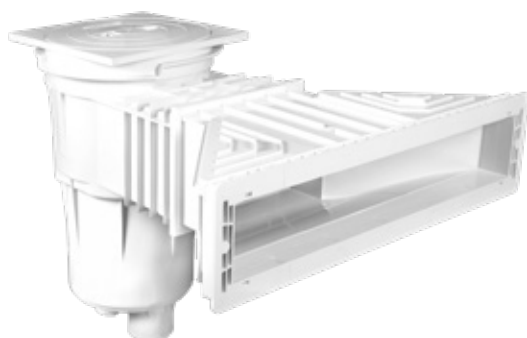
New range of skimmer 175L with recommended flow of 75 m³/h. UV treated white ABS with top square lid and frame. With flap and flow regulation plug. Supplied with extra strong plastic basket with handle. Skimmer has an option of 3 connection sizes: 1½" internal threaded, 2" threaded and 50mm diameter for gluing.

Overflow connection of 40mm diameter. For optimum results it is recommended to use 1 skimmer per 25m² of pool surface area.

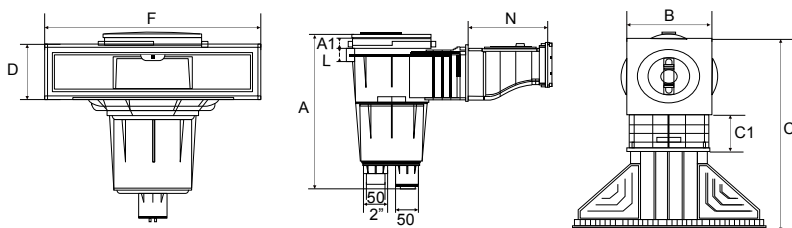
Concrete: Euro ABS skimmer w/ Square Frame and round lid for concrete pool.

Liner: Euro ABS skimmer w/ Brass Inserts for screws, Square Frame and round lid for liner pool.

Skimmer for concrete



Skimmer for liner



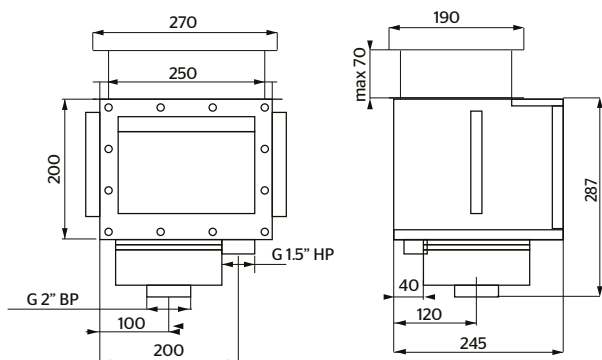
Code	Description	A	A1	B	C	C1	D	F	L	N	Weight	Volume
		(mm)									(kg)	(m ³)
0159222	Euro Skimmer ABS Concrete	470	44	250	620	120	137	551	32	250	5.3	0.183
0159227	Euro Skimmer ABS Liner	470	44	250	630	120	137	551	32	265	5.8	0.183

Skimmer AISI 316

Standard Skimmer AISI 316 - Concrete

Made of stainless steel AISI 316, standard skimmer has internal threaded connection of 2". Recommended Flow is 8 m³/hr. Available for concrete installation.

Code	Description	Weight	Volume
		(kg)	(m ³)
01592010	STD Skimmer AISI 316 Concrete	5.3	0.12

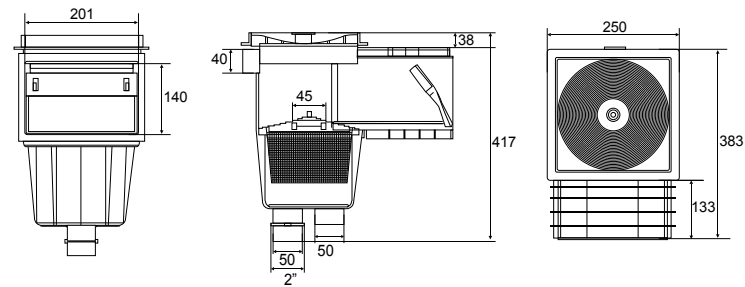


Pool Fittings

Skimmer AISI 316

Standard Skimmer with SS Face Plate for concrete

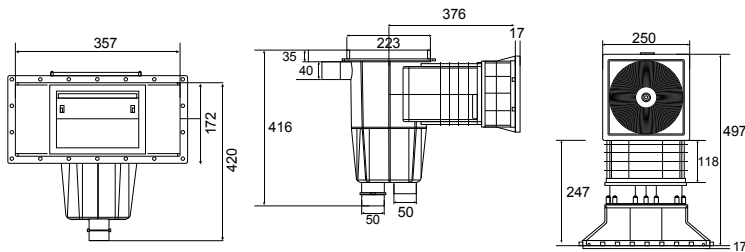
Manufactured in UV treated white ABS with SS face plate in AISI 316. Supplied with top square lid and frame. With flap and flow regulation plug. Supplied with extra strong plastic basket with handle. Skimmer has 3 optional connections for bottom suction. 1 1/2" internal thread, 2" outer thread and Ø50 mm inner wall for gluing. Recommended flow is 5m³/h. For optimum results it is recommended to use 1 skimmer per 25m² of pool surface area. The skimmer suction can also be used for vacuum cleaning the pool floor.



Code	Description	Weight	Volume
		(kg)	(m³)
015901010	Standard Skimmer ABS with SS Face plate concrete	3.75	0.062

Wide Mouth Skimmer with SS Face Plate for Concrete

Manufactured in UV treated white ABS with SS face plate in AISI 316. Supplied with top square lid and frame. Skimmer has 3 optional connections for bottom suction. 1 1/2" internal thread, 2" outer thread and Ø50mm inner wall for gluing. Recommended flow is 7.5m³/h.



Code	Description	Weight	Volume
		(kg)	(m³)
015901020	Wide Mouth Skimmer ABS with SS Face Plate Concrete	6.20	0.108

ABS Inlets



Return Inlet ABS Threaded

Made in white ABS with 2" outer connection thread and Ø50 mm inner wall **for concrete pools**. Installed with female threaded wall conduits. Maximum Flow: 7 m³/hr Recommended max. flow velocity 4m/s.

Code	Description	Std packing	Volume
			(m³)
01592828-2	Return Inlet ABS threaded	24	0.020



Return Inlet ABS Slip Fit

Made in white ABS with Ø63 mm outer connection and Ø50 mm inner wall **for concrete pools**. Installed with internal glue type wall conduits. Maximum Flow: 7 m³/hr. Recommended maximum flow velocity 4 m/s.

Code	Description	Std packing	Volume
			(m³)
01592828	Return Inlet ABS Slip Fit	24	0.020

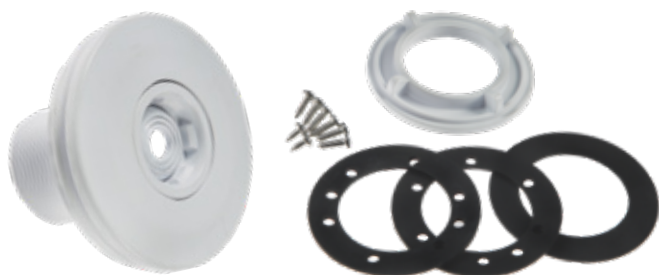


Pool Fittings

ABS Inlets

Return Inlet ABS Threaded for Liner

Made in white ABS with 2" outer connection thread and Ø50 mm inner wall **for liner pools**. Supplied with gasket, screws and nut for liner fixing. Installed with female threaded wall conduits. Maximum Flow: 7 m³/hr. Recommended max. flow velocity 4 m/s.



Code	Description	Std packing	Volume (m³)
01592828-3	Return Inlet ABS Threaded for Liner	12	0.020

Return Inlet ABS Threaded for Prefabricated

Made in white ABS with 2" outer connection thread and Ø50 mm inner wall **for prefab pools**. Supplied with gasket and rear nut for prefab pool fixing. Installed with female threaded wall conduits. Maximum Flow: 7 m³/hr. Recommended max. flow velocity 4 m/s.



Code	Description	Std packing	Volume (m³)
01592836	Return Inlet ABS Threaded for Prefab	12	0.020

Suction Inlet ABS Threaded

Made in white ABS with 2" outer connection thread and Ø50 mm inner wall **for concrete pools**. Installed with female threaded wall conduits. Supplied with threaded plug of 1 1/2". Maximum pressure: 6 Bar



Code	Description	Std packing	Volume (m³)
01592827-2	Suction Inlet ABS threaded	24	0.020

Suction Inlet ABS Slip Fit

Made in white ABS with Ø63 mm outer connection and Ø50 mm inner wall **for concrete pools**. Installed with internal glue type wall conduits. Supplied with threaded plug of 1 1/2". Max pressure: 6 Bar



Code	Description	Std packing	Volume (m³)
01592827	Suction Inlet ABS Slip Fit	24	0.020

Suction Inlet ABS Threaded for Liner

Made in white ABS with 2" outer connection thread and Ø50 mm inner wall **for liner pools**. Supplied with gasket, screws and nut for liner fixing. Installed with female threaded wall conduits. Threaded plug of 1 1/2". Maximum pressure: 6 Bar.



Code	Description	Std packing	Volume (m³)
01592827-4	Suction Inlet ABS Threaded for Liner	12	0.020

Suction Inlet ABS Threaded for Prefabricated

Made in white ABS with 2" outer connection thread and Ø50 mm inner wall **for prefabricated pool**. Installed with female threaded wall conduits. Threaded plug of 1 1/2". Supplied with gasket and rear nut for prefab fixing. Maximum pressure: 6 Bar.



Code	Description	Std packing	Volume (m³)
01592827-3	Suction Inlet ABS threaded for Prefab	12	0.020

Pool Fittings

ABS Inlets

Floor Inlet ABS Slip Fit

Made in white ABS with Ø63 mm outer connection and Ø50mm inner wall and screws in stainless steel. Its unique design permits 360º dispersion of fresh water in the pool. Max. Recommended flow rate: 12m³/h, flow rate can be manually regulated with the help of an adjustable screw fitted on top centre of the inlet.



Code	Description	Std packing	Volume
			(m³)
01592825	Floor Inlet ABS Slip Fit	24	0.020

Floor Inlet ABS threaded

Made in white ABS with 2" outer connection thread and Ø50 mm inner wall. Max. recommended flow rate: 12m³/h. Its unique design permits 360º dispersion of fresh water in the pool.



Code	Description	Std packing	Volume
			(m³)
01592825-2	Floor Inlet ABS Threaded	24	0.020

Floor Inlet ABS threaded for Liner

Made in white ABS with 2" outer connection thread and Ø50 mm inner wall. Supplied with gaskets, flanges and screws for Liner fixing. Max. Recommended flow rate: 12m³/h, flow rate can be manually regulated with the help of an adjustable screw fitted on top centre of the inlet.



Code	Description	Std packing	Volume
		(m³)	(m³)
01592825-1	Floor Inlet ABS Threaded for Liner	12	0.020

Wall Return Inlet ABS Slip Fit

Made in white ABS with Ø50 mm outer connection. Max recommended flow rate: 9m³/h.



Code	Description	Std packing	Volume
		(m³)	(m³)
01592829	Wall Return Inlet ABS Slip Fit	12	0.020



NEW LINE

ATECPOOL HIGH QUALITY Stainless Steel AISI 316

Find everything you would ever need
for an adequate water circulation in your
swimming pool.



Pool Fittings

SS Inlets

Return Inlet AISI 316

Direction-adjustable return inlet in polished stainless steel AISI 316 with outer thread 1½" and Ø20 mm eyeball. Recommended flow: 4.5 m³/hr.



Code	Description	Length (mm)	Weight (kg)	Volume (m³)
01592858	Return Inlet AISI 316	50	0.30	0.001

Floor Inlet AISI 316

Adjustable floor return inlet made of polished stainless steel AISI 316 with 2" external thread. Max. Recommended flow rate: 14m³/h, however, flow rate can be manually regulated with the help of an adjustable screw.



Code	Description	Length (mm)	Weight (kg)	Volume (m³)
01592862	Floor Inlet AISI 316	50	0.90	0.002

Adjustable Return Inlet AISI 316

Adjustable Return Inlet in AISI 316. Flow rate can be manually regulated with the help of an adjustable screw. Available in two female threaded connections. Maximum flow rate for 2" female threaded 21.5 m³/hr. Maximum flow rate for 3" female threaded 40 m³/hr.



Code	Description	Flow rate (m³/h)	Weight (kg)	Volume (m³)
01592859	Adjustable Return Inlet 2"	21.5	0.7	0.002
01592861	Adjustable Return Inlet 3"	40	1.1	0.003

Adjustable Floor Return Inlet

Adjustable Floor Return Inlet in chromed brass. Flow rate can be manually regulated with the help of an adjustable screw located underneath the front cover. Available in two male threaded connections. Maximum flow rate for 2" male threaded 22 m³/hr. Maximum flow rate for 3" male threaded 42 m³/hr.



Code	Description	Flow rate (m³/h)	Weight (kg)	Volume (m³)
01592859-1	Adjustable Floor Inlet 2"	22	0.7	0.002
01592861-1	Adjustable Floor Inlet 3"	42	1.1	0.003

Suction Inlet AISI 316

Suction inlet in polished stainless steel AISI 316 with outer thread 1 1/2". Length 50 mm, supplied with cover.



Code	Description	Length (mm)	Weight (kg)	Volume (m³)
01592860	Suction Inlet AISI 316	50	0.30	0.001

Suction Inlet with threaded cover AISI 316

Suction inlet in polished stainless steel AISI 316 with outer thread 2". Length 40 mm, supplied with threaded cover.



Code	Description	Length (mm)	Weight (kg)	Volume (m³)
01592860-1	Suction Inlet threaded cover AISI 316	40	0.30	0.001

Pool Fittings

Main Drains

Circular Main Drain

Circular main drain in UV treated white ABS Ø210 mm, 2" threaded side outlets, grill fitted with screws. Max flow rate 12 m³/hr, designed for surface suction velocity not exceeding 0.5 m/s. For liner model supplied with self-adhesive gaskets, flange and screws.



Code	Description	Std packing	Weight (kg)
01592832	Circular Main Drain Concrete	1	0.6
01592832-1	Circular Main Drain Liner	1	0.6

Anti-Vortex Main Drain

Circular main drain in UV treated white ABS Ø210 mm, 2" threaded side outlets, anti-vortex grill fitted with screws. Max flow rate 13 m³/hr, designed for surface suction velocity not exceeding 0.5 m/s. For liner model supplied with self-adhesive gaskets, flange and screws.



Code	Description	Std packing	Weight (kg)
03100257	Circular Main Drain Antivortex Concrete	1	0.6
03100257-1	Circular Main Drain Antivortex Liner	1	0.6



Square Main Drain

Square Main Drain in UV treated white ABS 210 x 210 mm, 2" threaded side outlets. Maximum Flow rate 13 m³/hr. For liner model supplied with self-adhesive gaskets, flange and screws. Grille 175 x 175 mm.



Square Main Drain AISI 316

Made of stainless steel AISI 316, square main drain 150 x 150 mm, 100mm height, 2" female threaded side connection. Grille 146 x 146 mm fixing using screws. Flow rate: 13.5 m³/hr.

Code	Description	Std packing	Weight (kg)
03100258	Square Main Drain Concrete	1	1
03100258-1	Square Main Drain Liner	1	1.2

Code	Description	Std packing	Weight (kg)
03100259S	Square Main Drain AISI 316	1	3

Drain Grilles



Circular Drain Grille ABS

Circular drain grille and ring support in white ABS. Ø200mm, supplied with fixing screws. Max flow rate 13 m³/hr.



Anti-Vortex Drain Grille ABS

Circular antivortex drain grille and in white ABS. Ø170mm. Maximum flow rate 12 m³/hr.

Code	Description	Size (mm)	Std packing	Weight (kg)
10534100	Circular Drain Grille ABS	Ø200	1	0.3

Code	Description	Size (mm)	Std packing	Weight (kg)
10532100	Antivortex Drain Grille ABS	Ø170	1	0.3



Circular Drain with S.S. Grille

Support ring in UV treated white ABS, circular grille Ø200mm made of stainless steel AISI 316. Supplied with grille fixing screws. Recommended flow rate 13 m³/hr.



Anti-Vortex Drain Grille AISI 316

Support ring and circular grille Ø220mm made of stainless steel AISI 316. Supplied with grille Ø185mm and fixing screws. Recommended flow rate 14 m³/hr.

Code	Description	Size (mm)	Std packing	Weight (kg)
10532116	Circular Drain with SS Grille	Ø200	1	1.2

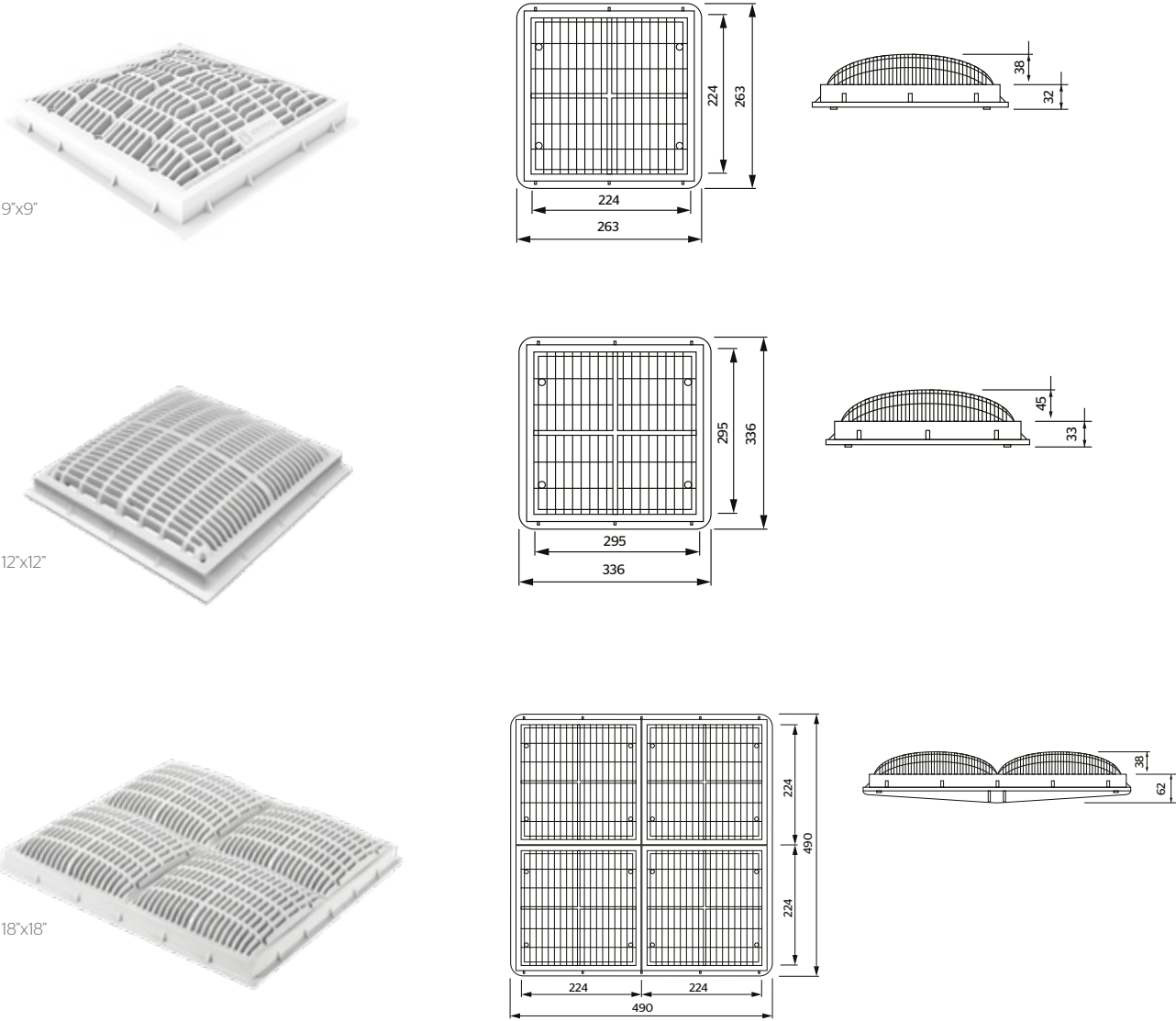
Code	Description	Size (mm)	Std packing	Weight (kg)
10532115	Anti-Vortex Drain Grille AISI 316	Ø220	1	1.5

Pool Fittings

Anti-Suction Frame and Grate

Anti-Suction Frame and Grate ABS

Square Frame and grate in UV treated white ABS for commercial pools. Available in three sizes. Anti-Suction, curved surface design. VGB compliant and tested to ANSI/APSP-7, 2006 standards. Designed for surface suction velocity not exceeding 0.5 m/s.



Code	Description	Flow Rate	Weight	Size	Volume
		(m³/h)	(kg)	(mm)	(m³)
01592813	Anti-Suction Frame & Grate 9"x9"	23	1.2	9"x9"	0.02
01592814	Anti-Suction Frame & Grate 12"x12"	56	1.6	12"x12"	0.02
01592815	Anti-Suction Frame & Grate 18"x18"	92	4.8	18"x18"	0.02

Frame and Grate ABS

Square Frame and grate in UV treated white ABS for commercial pools. Available in two different sizes - 250 x 250 mm and 300 x 300 mm. Designed for surface suction velocity not exceeding 0.5 m/s.

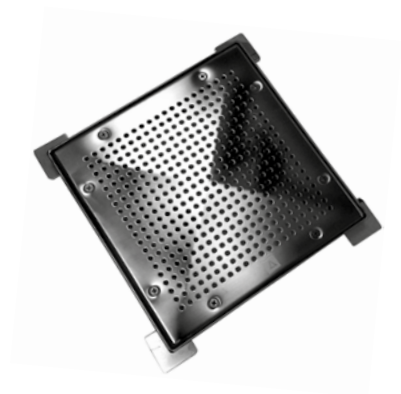
Code	Description	Flow Rate	Weight	Size	Volume
		(m³/h)	(kg)	(mm)	(m³)
01592812	Frame & Grate 250 x 250	27	1.2	250 x 250	0.02
01592812-1	Frame & Grate 300 x 300	43	1.8	300 x 300	0.02

Pool Fittings

Anti-Suction Frames and Grates

Frame and Grate Stainless Steel

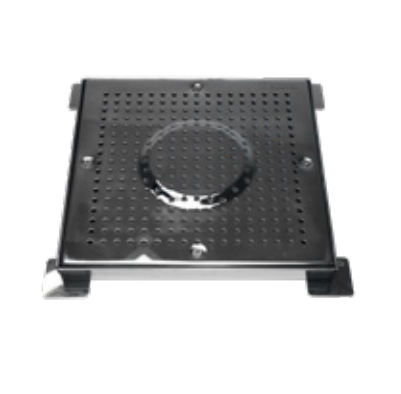
Square Frame and grate in polished Stainless steel AISI 316 for concrete pools. Available in four standard sizes, other sizes can be made upon request.



Code	Description	Flow Rate	Weight	Size	Volume
		(m³/h)	(kg)	(mm)	(m³)
10528901	SS Frame & Grate 250 x 250	27	1.5	250 x 250	0.0033
10528121	SS Frame & Grate 300 x 300	43	2.2	300 x 300	0.0041
10528181	SS Frame & Grate 400 x 400	83	4	400 x 400	0.0059
10528182	SS Frame & Grate 500 x 500	136	4.5	500 x 500	0.0100

Anti-Vortex Frame and Grate AISI 316

Made of AISI 316 stainless with anti-vortex grille. Supplied with grille fixing screws. Special sizes on request.



Code	Description	Flow Rate	Weight	Size	Volume
		(m³/h)	(kg)	(mm)	(m³)
10528902	SS Frame & Grate AV 250 x 250	24	1.5	250 x 250	0.0033
10528130	SS Frame & Grate AV 300 x 300	41	2.2	300 x 300	0.0041
10528140	SS Frame & Grate AV 400 x 400	79	4	400 x 400	0.0059
10528150	SS Frame & Grate AV 500 x 500	128	4.5	500 x 500	0.0100

Anti-Suction Frame and Grate AISI 316

Anti-Suction, curved surface design. VGB compliant. Made of AISI 316 stainless with curved grille. Supplied with grille fixing screws. Available in three different sizes.



Code	Description	Flow Rate	Weight	Size	Volume
		(m³/h)	(kg)	(mm)	(m³)
10528122	Anti-Suction SS Frame & Grate 300 x 300	41	5.5	300 x 300	0.0041
10528183	Anti-Suction SS Frame & Grate 400 x 400	80	7.2	400 x 400	0.0059
10528185	Anti-Suction SS Frame & Grate 500 x 500	132	8.5	500 x 500	0.0100



Pool Fittings

Wall Conduits



Wall Conduit ABS Threaded

Made of grey ABS, length 300mm. 2" female and male thread connection. Used with threaded mini dichro lights and threaded inlets. 2 holes for taut positioning in the concrete.



Wall Conduit ABS Slip Fit

Made of grey ABS, length 300 mm. 2" rear male thread and Ø63 mm smooth inner wall for gluing slip fit inlets and mini dichro lights. 2 holes for taut positioning in the concrete.



Wall Conduit ABS Threaded Concrete

Made of White ABS, length 300mm. 2" female and male thread connection. Used with threaded mini dichro lights and threaded inlets. 2 holes for taut positioning in the concrete.



Wall Conduit ABS Threaded Liner

Made of White ABS, length 300mm. 2" female and male thread connection. Used with Liner fittings. 2 holes for taut positioning in the Liner pool.

Code	Description	Standard Packing	Weight (kg)
01592840	Wall Conduit 2" Threaded	12	3.0
01592840-1	Wall Conduit 63 MM Glue	12	3.0

Code	Description	Standard Packing	Weight (kg)
01592841	Wall Conduit white ABS Threaded for Concrete	12	3.0
01592841-1	Wall Conduit white ABS Threaded for Liner	12	3.0

Stainless Steel Wall Conduits

Made in AISI 316. Connection 2" female and male threaded on either ends.



Code	Description	Standard Packing	Weight (kg)
01592865	Wall Conduit AISI 316 2" Threaded	1	3.0

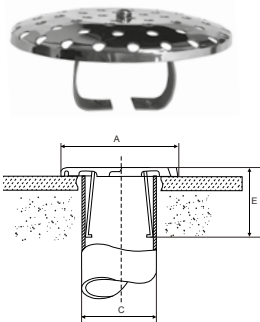
Overflow Gutter Drain AISI 316

Made of stainless steel AISI 316. 2" male connection.



Code	Description	Connections (inch)	Flow Rate (m³/h)	Weight (kg)	Volume (m³)
03100282-1	Gutter Drain 2" AISI 316	2"	7	1.2	0.009

Made of stainless steel AISI 316 with clamp for fixing inside the pipe. Available in Ø130mm.



Code	Description	Dimensions (mm)	Connections (mm)	Flow Rate (m³/h)	Weight (kg)	Volume (m³)
		ØA ØE	ØC			
03100282	Gutter Drain 130mm w/ clamp	130 75	90 - 75	22	0.9	0.009

Overflow Gutter Drain with SS Grille

Overflow Gutter Drain made of white ABS with stainless steel AISI 316 grille, fixed with screws. 50mm with flow rate 4.5 m³/hr and 63mm with a flow rate of 7 m³/hr.



Code	Description	Weight (kg)	Volume (m³)
01592820	Gutter Drain with SS Grille 50mm	0.5	0.0002
01592820-1	Gutter Drain with SS Grille 63mm	0.6	0.0002

Overflow Gutter Drain ABS

Overflow gutter drain made of white ABS plastic. With SS screws. To be installed at the bottom of the overflow gutter. Two models available with Ø50mm and Ø63mm connections. To be glued to Ø50mm or Ø63mm PN 10 pipe.



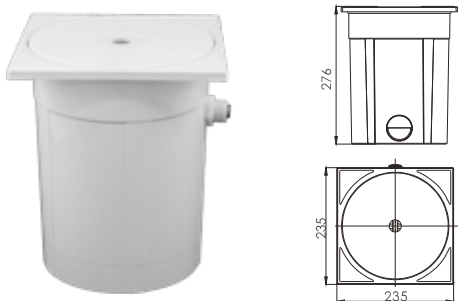
Code	Description	Standard Packing	Volume (m³)
01592819	Overflow Gutter Drain 50 MM	12	0.016
01592819-1	Overflow Gutter Drain 63 MM	12	0.016

Pool Fittings

Water Level Regulators

Water Level Regulator

Made of UV treated white ABS with square lid, with adjustable buoy. Direct connection to pool via skimmer. Installation of a level regulator will ensure that the desired water level is always maintained, thereby eliminating the risk of dry running of the pump when the water level falls below the skimmer weir level.



Code	Description	Weight (kg)	Volume (m³)	Std Packing
01230007	Water Level Regulator ABS	2	0.016	1

Electronic Water Level Regulator

For Skimmer with Solenoid Valve

The waterproof mini float switch (IP67) determines the water level in a skimmer. The mini float switch is installed on a support rail in the skimmer and can be switched from “filling” to “ draining. A damped solenoid valve for the water inlet is available as an option. The sensor cable can be extended upto 50m with shielded cable. During wave movement , the integrated time delay prevents too short switching distances.



Code	Description	Power / Voltage / Phase	Dimension (mm)	Electrode Voltage
01231609	Electronic Regulator w/ Solenoid Valve	0.9 kW / 230V / Mono / 5A	140x130x75	12V

Electronic Water Level Regulator

For overflow pool

Level Regulator with graphical water level indicator for swimming pools and whirlpools with overflow channel. In addition to the water level control, the control system also contains a dry running protection and force the filter pump to switch-on.

5 or 6 stainless steel electrodes are hung in the collection tank and are connected to the control system to determine the water level. These electrodes have different colored wires and are available in two grades of SS. The electrode 6 (terminal 9) enables independent activation of the mode forced switch-on and water feed.



Code	Description	Power / Voltage / Phase	Dimension (mm)	Electrode Voltage
01231202	Electronic Regulator for Overflow	0.5 kW/ 230V / Mono / 4A	220x220x100	12V



Spa Fittings Accessories

Adjustable Jet Ø50x50

Made of white ABS for perfect gluing to PVC pipes. Ø50mm water inlet and air inlet. Flow - 4.5 m³/hr. Unique design permits for a combination of air and water massage by way of a venture system. Atmospheric Pressure at 0.8 bar. Available with stainless steel AISI 316 trim.



Code	Description	Weight (kg)	Volume (m³)	Std Packing
00590050	JET 50X50 ABS	6.92	0.027	25
00590057	JET 50X50 ABS with S.S. Trim	9.92	0.028	25

Adjustable Jet Ø1.5"x1.5"

Made of White ABS for perfect gluing to PVC pipes. Ø1.5" water inlet and air inlet. Flow - 4 m³/hr. Unique design permits for a combination of air and water massage by way of a venture system. Atmospheric Pressure at 0.8 bar. Available with stainless steel AISI 316 trim.



Code	Description	Weight (kg)	Volume (m³)	Std Packing
00590055	JET 1.5"X1.5" ABS	5.82	0.026	25
00590059	JET 1.5"X1.5" ABS with S.S. Trim	9.02	0.028	25

Adjustable Jet Ø1"x1" Chrome

Made of White ABS with Chrome front finish for perfect gluing to PVC pipes. Ø1" water inlet and air inlet. Flow - 2.2m³/hr. Unique design permits for a combination of air and water massage by way of a venture system, atmospheric pressure at 0.8 bar.



Code	Description	Weight (kg)	Volume (m³)	Std Packing
00590060	JET 1" X 1" ABS with Chrome front	6.92	0.028	12

SPA Main Drain 2"

Made of White PVC with adaptor union for gluing to PVC pipe. Can be used for concrete and pre-fabricated pools. Also available with S.S. AISI 316 drain grille. Connection 2". Max flow rate 12 m³/hr, designed for surface suction velocity not exceeding 0.5 m/s.



Code	Description	Weight (kg)	Volume (m³)	Std Packing
00590024	SPA Drain 2" ABS	2.92	0.0098	6
00590027	SPA Drain 2" ABS with S.S. Grille	4.53	0.0098	6

Adjustable Air Inlet

Controls air to venture system with 1" orifice for air regulation. The knob is mounted on the deck of the SPA tub and is connected to the air venture pipe of the massage jet enabling users to regulate the air flow into the massage jet. 1" threaded fitting made of white PVC with chrome plated front panel.



Code	Description	Weight (kg)	Volume (m³)	Std Packing
00590047	Adjustable Air Inlet Cr	0.55	0.028	10



Pneumatic Press Button

Used for starting and ending massage functions. Chrome plated front panel.

Code	Description	Weight (kg)	Volume (m³)	Std Packing
00590045	Pneumatic Press Button	0.52	0.078	10

Pneumatic Switch

Used with pneumatic press button for starting and ending massage functions.

Code	Description	Weight (kg)	Volume (m³)	Std Packing
00590049	Pneumatic Switch	0.53	0.0098	10

Spa Fittings Accessories



Blower Nozzle

For air distribution into the SPA from air blowers. White plastic with 9 holes air jet with housing. Flow rate 4.5 to 5.4 m³/hr. Also available with stainless steel front panel.

Code	Description	Weight (kg)	Volume (m ³)	Std Packing
00590062	Air Nozzle	0.5	0.004	24
00590063	Air Nozzle with S.S. trim	0.98	0.004	24



Flexible SPA Hose

Flexible PVC pressure hose with solvent connection to Ø25, Ø32, Ø50 and Ø63mm. All available in 15 meter roll. Enables easy plumbing for SPA features.

Code	Description	Weight (kg)	Volume (m ³)	Std Packing
00590125	Flexible SPA Hose Ø25	2.0	0.080	1
00590132	Flexible SPA Hose Ø32	2.2	0.100	1
00590150	Flexible SPA Hose Ø50	2.5	0.257	1
00590163	Flexible SPA Hose Ø63	2.8	0.275	1



Single Push Button Controls

Electronic control system for SPA or whirlpool controls, switching On/Off by pressing one push button. Electronic motor protection with a setting range of 0 to 8A ensures optimum pump protection. The controller is standard equipped with an adjustable runtime limitation from 0 to 25 minutes.

Supplied with single push button switch in stainless steel cast, waterproof IP68, suitable for fitting below water surface, cable length of 1.5 m.

Code	Description	Dimension (mm)	Power consumption (VA)	Switching capacity (A)	Nominal Voltage (V)
00590710	Electronic Control Box	175x125x76	2	8A AC3	1 / N / 230V / 50Hz



Code	Description	Diameter (mm)	Protection Class	Cable Length (m)	Nominal Current (mA)
00590701	SPA Electronic Control One Push Button	Ø28	IP68	1.5	150mA



Three Push Button Controls

SPA control unit consist of 3 push button deck mountable fitting and electronic control box. Three Push Button fitting is mounted on the deck of the SPA and is connected to the electronic control box enabling users to stop / start massage functions, underwater lighting etc. 3 push button fitting made in white plastic, also available with S.S. trim on request , protection class IP65. Standard cable length 15 meters. Electronic control box - Input 230V / Power 1750W.

Code	Description	Weight (kg)	Volume (m ³)	Std Packing
00590700	SPA Electronic Control Three Push Button	3.97	0.032	1

